

Remote Viewer

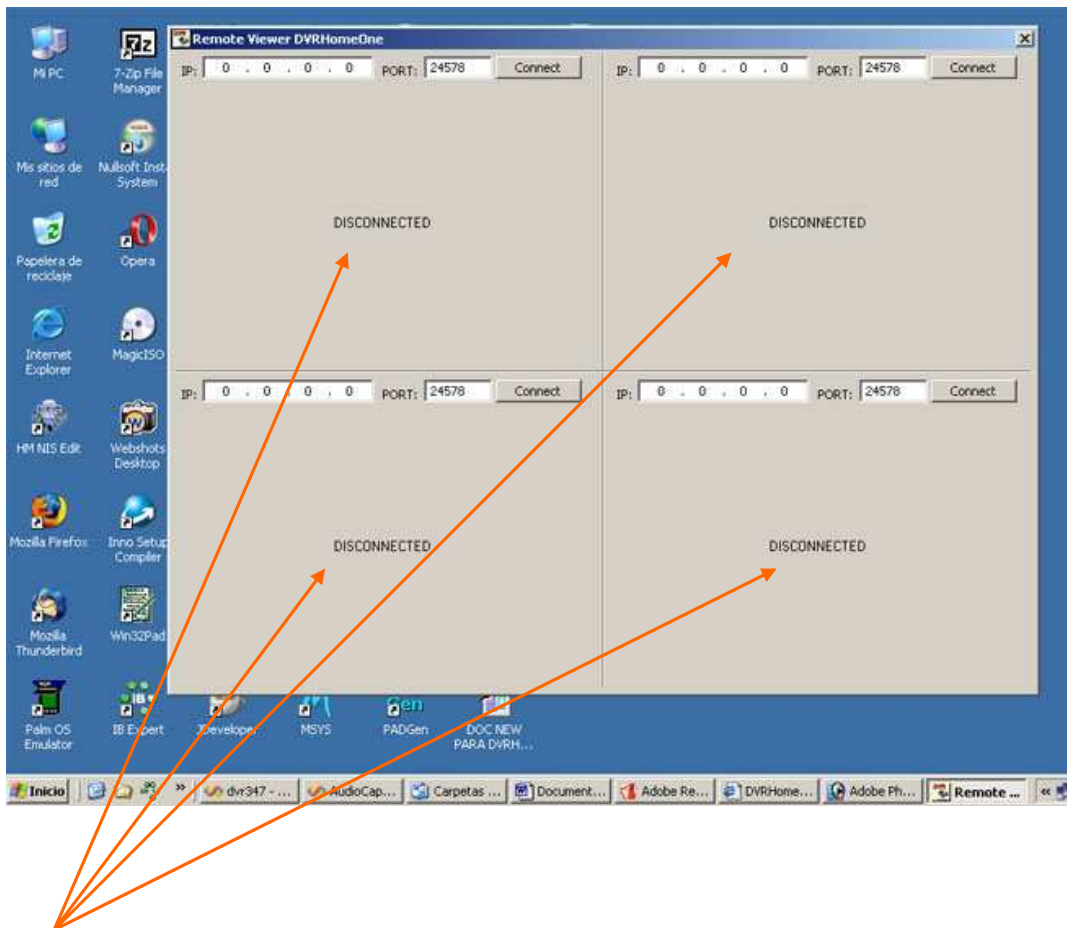
Introduction

Install the Remote Viewer in another PC of the DVRHomeOne Server.

Remote Viewer allows you to view the cameras installed in the server via Internet or LAN. Home or Office can be monitored using this software, easy to use.

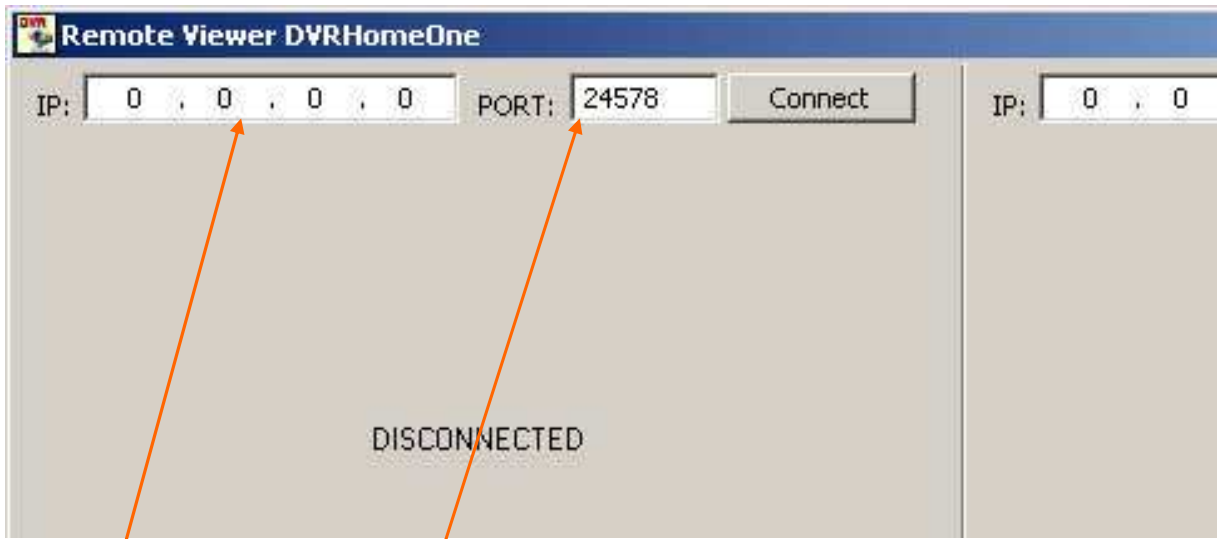
After Installing Remote Viewer v.1.2.3 or higher go to *Start button of Windows, All Program, "DVRHomeOne Remote Viewer"* and then select:

"Remote Viewer 1" or "Remote Viewer 4"



4 different locations can be monitored at the same time in "Remote Viewer 4". "Remote Viewer 1" is only for one location. You can open 4 or more instance of "Remote Viewer 1"

How to connect to server.



Server IP to connect. Server Port to connect (default is 24578)

If you don't know "Server IP" or "Server PORT" then leave in zero the IP field and press "CONNECT" button. Then will ask to you "User ID" and "Password". Before, you must have registered in **DVRHomeOne Server** a "User ID".

If you know "Server IP" and "Server PORT" then write and press "CONNECT" button. Then will ask to you "User ID" and "Password"; if you have registered in **DVRHomeOne Server** a "User ID". Then write the data in the corresponding fields and press OK, otherwise leaves in blank spaces and press OK.

